

GAE System 6CX Compact Coaxial 2-Way Loudspeaker

Key Features:

Small format high fidelity passive loudspeaker system for music and speech reproduction. The square design incorporates a high power N-Dym 6,5-inch transducer with 1,5-inch voice coil in a vented cabinet. Together with the coaxial integrated N-Dym HF-Driver with 1-inch voice coil. The low loss crossover design optimises the even radial dispersion pattern. The smooth dispersion pattern enables low feedback in concern to microphone operation. The system is available as a mobile or an installation version.



General:

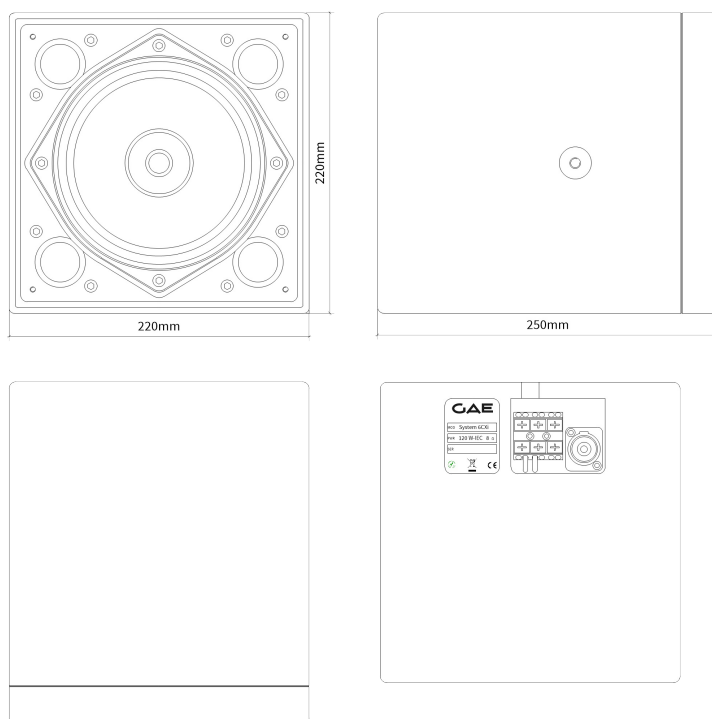
The System 6CX is a passive high power background / foreground loudspeaker system with a radial dispersion of 90°.

Mobile and the install versions are build from 12mm multiplex wood. The mobile version is equipped with a baffle from aluminium and a pair of speakon NL-4 connectors. The install version provides a recessed WAGO series 862 clamp-terminal in parallel to one speakon NL-4 connector.

8mm threaded shafts in the cabinet supports mounting fixtures. The mobile version offers additional rubber runners on its downside.

With its high sensitivity of 91dB SPL/1m for 1W the System 6CX produces an impressive 115dB RMS/1m with 200W. The acoustical bandwidth is 85Hz - 19KHz (+/- 2,5dB with controller) and the phase response within +/-45°.The non critical impedance response with a minimum of 6,1 Ohm@255Hz allows the safe operation of multiple System 6CX on one channel of a professional grade power amplifier.

System 6CXm with aluminium baffle



Architectural:

The System 6CX is a compact system in a square design and is remarkably accepted in sophisticated installations needing a high fidelity and high power playback system. The system incorporates an exceptionally reliable Coaxial transducer with neodymium magnets and efficient voice coil cooling. The speakers housing dimensions are only 220x220x250mm (HxWxD) and different colour options in RAL/NCS tones are available to match interior design. A special designed protective front grill with a highly permeable acoustic foam cover is recessed into the baffle design.

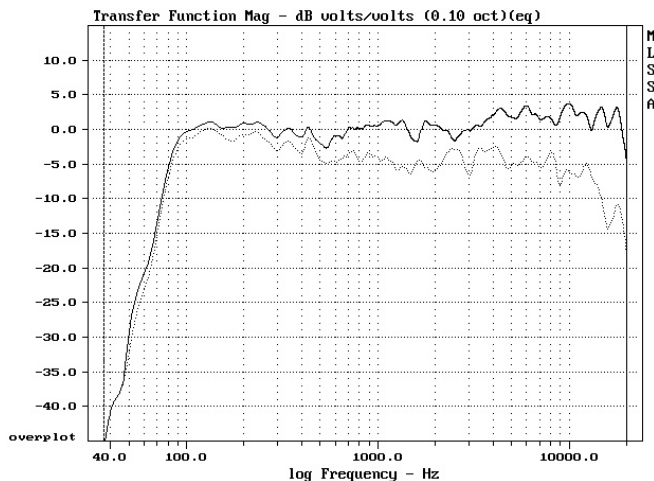
The install version offers completely recessed electrical connectors and a notch in the housing for a cable feed to allow wall and ceiling installations without spacing the loudspeaker in front of the surface. As an option a colour coordinated mounting yoke is available.

The musical quality can easy be underlined with a matching sub-/low woofer system like the GAE BR12N extending the performance down to 40Hz. Variant Versions of the System 6CX-i and 6CX-m are the System 6CX-AL in a fire proof aluminium housing and the System 6CX-RA in a sealed tubular enclosure.

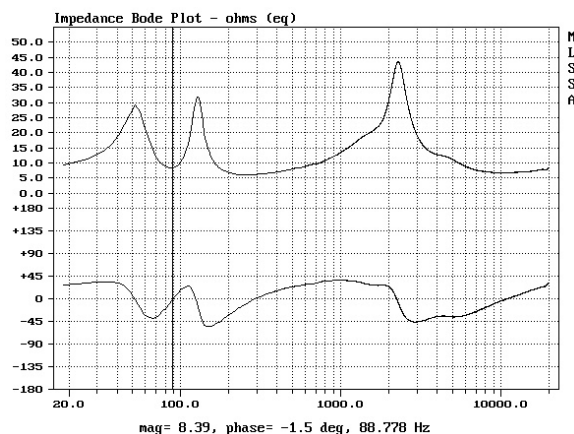
System 6CX physical dimensions of mobile and install version

Applications:

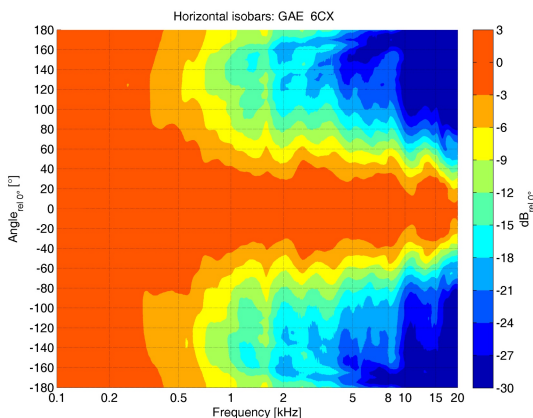
Space-sensitive fill-, effect- and surround loudspeaker for theatres * High Quality distributed and paging systems * Background music systems for clubs and restaurants * Exhibition Audio in Museum displays * High quality boardroom installations * Personal table top monitoring for conference and congress



System 6CX: On Axis Frequency Response unsmoothed



System 6CX: Impedance and Phase Response



System 6CX: Horizontal/Vertical Isobars Of Dispersion

Engineering:

Design: 2-Way passive Coaxial loudspeaker in a vented cabinet design

Frequency Response -3dB: (+/- 2,5dB): 85Hz - 19KHz in Fullrange Setup

Frequency Response -10dB:(+/- 2,5dB): 75Hz - 19KHz in Fullrange Setup

Dispersion: 90° radial

Phase Response (+/-45°): 85Hz - 19KHz

Impedance Response: 8Ohm, Minimum of 6,10hm@255Hz

Power Handling Capacity: 120W RMS (IEC 268-5) = 32dBu, 240W Program = 35dBu

Sensitivity (2,83V/80hm/1m): 91dB/SPL

Program SPL: > 115dB @200W/1m¹

Components: 1x6,5-inch cone transducer with neodymium magnet and coated cone with 1,5-inch voice coil and coaxial mounted HF-driver with 1-inch voice coil

Mounting: 2 x M8 threads in sidewalls

Housing: 12mm multiplex wood with varnish coating

Dimensions (HxBxD): 220x220x250mm

System 6CX-i (install version):

Connectivity: 1 Push-in CAGE CLAMP® for 2,5mm cable, 1 speakon NL-4 in parallel

Weight: 6kg

System 6CX-m (mobile version):

Connectivity: 2 speakon NL-4 connectors

Weight: 7,2kg

Options: RAL/NCS colours for varnish coating. Standard Colour is RAL 9005 (black)

Optional attachments: wall/ceiling mounting yoke, standing yoke and customer specified mounting hardware.

Related Products: GAE BR 12N sub/low woofer system. System 6CX-AL Aluminium housing version, System 6CX-RA Tubular enclosure design

Compliant to: CE, ROHS, Reach

¹ ≤ 10% THD