

## Point Source Systems

### GAE System 6CX-RA

#### Coaxial 2-Way Loudspeaker In Tubular Housing

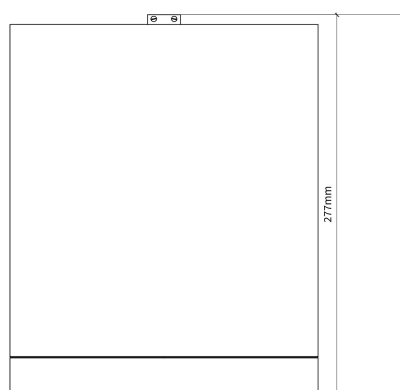
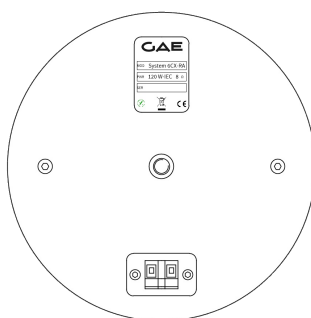
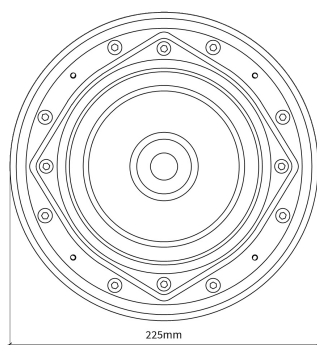


#### Key Features

High fidelity passive loudspeaker system for music and speech reproduction in a tubular format. The design incorporates a high power N-Dym 6,5-inch transducer with 1,5-inch voice coil in a sealed cabinet made from Vinyl and a 30mm aluminium baffle together with the coaxial integrated N-Dym HF-Driver with 1-inch voice coil. The low loss crossover design optimises the even radial dispersion pattern. The smooth dispersion pattern enables low feedback in concern to microphone operation.



System 6CX-RA



System 6CX/RA: physical dimensions

#### General:

The System 6CX-RA is a passive high power background / foreground loudspeaker system with a radial dispersion of 90°. The smooth frequency and phase response in line with the even acoustical dispersion allows low feedback microphone operation even at close distances.

With its high sensitivity of 91dB SPL/1m for 1W the System 6CX produces an impressive 115dB RMS/1m with 200W.

The acoustical bandwidth is 95Hz - 19KHz (+/- 2,5dB with controller) and the phase response within +/- 45°.

The non critical impedance response with a minimum of 6,1 Ohm@255Hz allows the safe operation of multiple System 6CX-RA on one channel of a professional grade power amplifier.

The System 6CX-RA housing is made of welded 10,5mm vinyl and a 30mm aluminium baffle. The connector is a screw terminal for 2,5mm wires.

The mechanical design allows e.g. a penduloos mounting by the M12 thread on the back wall.

Additional M6 threads are in the backwall to allow the fitting of safety steels.

#### Architectural:

The System 6CX-RA is a compact system in a cylindric design. It is remarkably accepted in sophisticated installations needing a high fidelity and high power playback system with smart mounting solutions .

The system incorporates an exceptionally reliable Coaxial transducer with neodymium magnets and efficient voice coil cooling. The musical quality can easy be underlined with a matching sub-/low woofer system as the GAE BR12N extending the performance down to 40Hz.

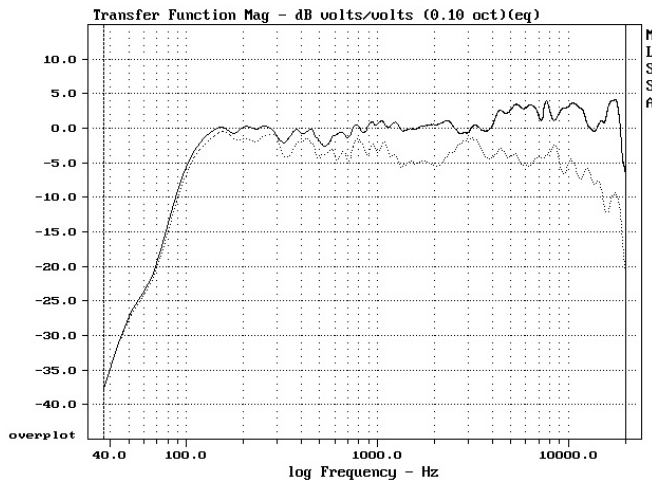
The speakers housing dimensions are only 277x225mm (HxD).

A special designed protective front grill with a highly permeable acoustic foam cover is recessed into the baffle design.

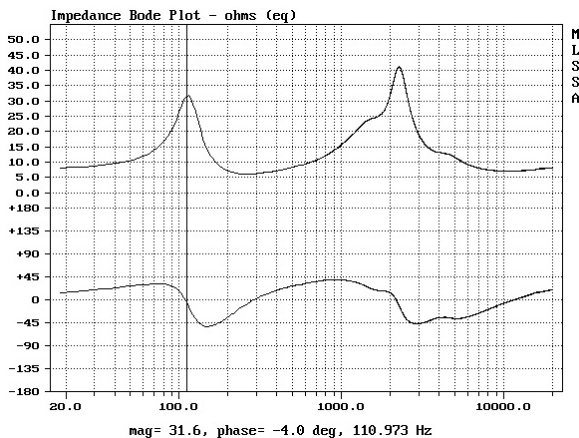
Connectivity is provided by screw terminal or a flame proof screwed cable gland. Different specialised mounting fixtures are available or can be factory supplied to customer specification.

## Applications:

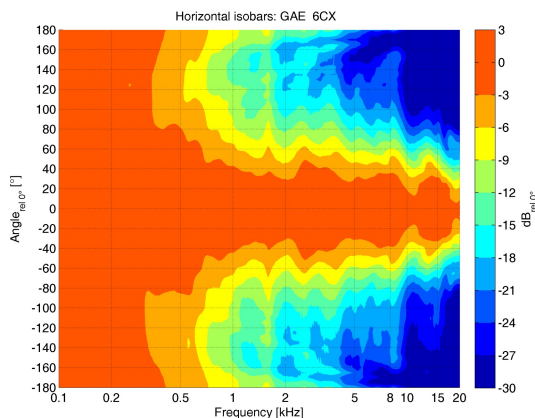
High Quality distributed and paging systems \* Background music systems for clubs and restaurants \* Exhibition and audio in museums



System 6CX-RA: On Axis Frequency Response unsmoothed



System 6CX-RA: Impedance and Phase Response



System 6CX-RA: Isobars of directivity

## Engineering:

Design: 2-Way passive Coaxial loudspeaker in a vented cabinet design

Frequency Response -3dB: (+/- 2,5dB): 85Hz - 19KHz in Fullrange Setup

Frequency Response -10dB: (+/- 2,5dB): 75Hz - 19KHz in Fullrange Setup

Dispersion: 90° radial

Phase Response (+/-45°): 85Hz - 19KHz

Impedance Response: 8Ohm, Minimum of 6,1Ohm@255Hz

Power Handling Capacity: 120W RMS (IEC 268-5) = 32dBu, 240W Program = 35dBu

Sensitivity (2,83V/8Ohm/1m): 91dB/SPL

Program SPL: > 115dB @200W/1m<sup>1</sup>

Components: 1x6,5-inch cone transducer with neodymium magnet and coated cone with 1,5-inch voice coil and coaxial mounted HF-driver with 1-inch voice coil

Mounting: penduled

Housing: Vinyl with aluminium baffle HxBxD): 220x220x242mm

Weight: 10,5kg

Options: 70V/100V line transformer

Related Products: GAE BR 12N sub/low woofer system. System 6CX-i, System 6CX-m wooden housing versions, System 6CX-AL (flame proof aluminum housing)

Compliant to: CE, ROHS, Reach

<sup>1</sup> ≤ 10% THD